

5100 El Camino, Unit 212

Los Altos, California

\$898,000

Unit 212 End Unit, Top Floor

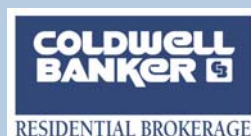
- 1348 square feet - all one level!
- Three bedroom/ two bathrooms
- Los Altos school system
- Vaulted ceilings, hardwood floors
- Stainless steel kitchen appliances, custom maple cabinets, granite counters
- Two covered parking spaces
- Fireplace, range, refrigerator, dishwasher, microwave
- HOA Fees \$472 includes hot water, cold water, garbage, sewers, and insurance.
- Large community area, patio, and walkway.
- Separate staircase for the second floor
- Elevator for all floors



www.5100elcamino.com

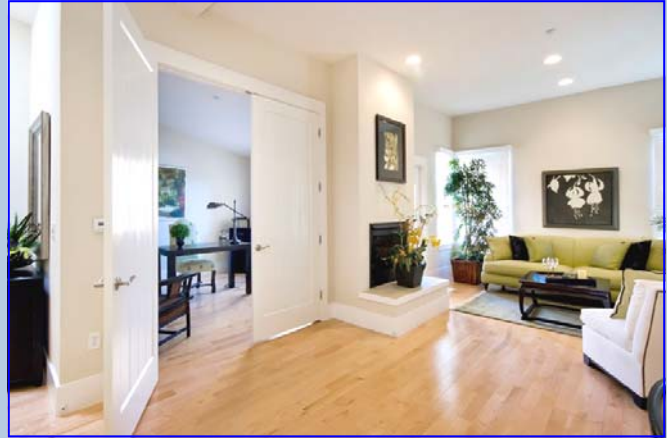


Nathan Merlin
Nathan@nathanmerlin.com
650-440-5588 Direct



Dave Luedtke
Dave.luedtke@cbnorcal.com
650-917-7960 Direct

The living room has 10 foot ceilings that slope up to over 12 feet tall. Recessed lighting provides a modern look. The wood trim has 5 inch molding and 8 inch baseboard. The 8 foot tall doors are solid wood with a plank-board design. The maple flooring provides a natural feel that can be accented with area rugs. The fireplace is a gas log style to provide beauty and comfort. The windows are Anderson.



The kitchen has 8 foot ceilings with recessed lighting. The cabinets are maple with plank-board shaker doors and drawers. The granite countertops have a black speckling to augment the stainless steel appliances. The maple flooring provides a natural feel. The appliances are GE Profile with a French door style refrigerator, free-standing gas range and full-venting microwave hood. The dishwasher is a Bosch model with a stainless steel door.



The master bedroom has 10 foot ceilings with 5 inch molding and 8 inch baseboard. The doors are solid wood with a plank-board design. The carpeting is new for this sale. The windows are Anderson.



The bathrooms have 8 foot tall ceilings. The cabinets are maple with a plank-board door with natural colored granite countertops and two deep-bowled under-mounted sinks. Fluorescent, incandescent, and heat lamps are provided to provide a variety of lighting situations. The shower surround is a matching granite to the countertops. A separate water closet provides additional privacy.

